

These instructions apply to:

MAI Wood Entry Door 2007-Current

- Tools Required:

  - Phillips Screwdriver
  - Hammer
  - Block of wood

Two or more people will be required if removing the door panel when performing any of the following instructions!

CAUTION!

Panel may be heavy.

Astragal and Flushbolt Placement Instructions:

Lower Flushbolt Replacement.....Page 1

Upper Flushbolt Removal .....Pages 2-3

Upper Flushbolt Installation .....Pages 3

Astragal Replacement.....Pages 3-4

Pella recommends removing door panel when possible and laying the panel on a flat and sturdy surface during Astragal or Flushbolt replacement.

Panel Removal:

- A. Use hammer and a nail or other such tool to knock each hinge pin up and out of the hinge knuckles.

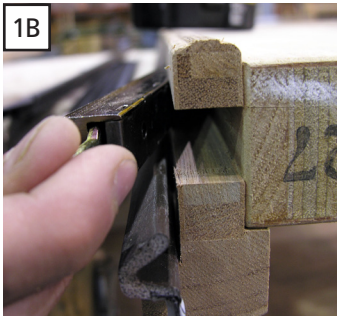
B. Remove the panel and lay it flat on a smooth, flat and sturdy surface.



1 Lower Flushbolt Replacement:

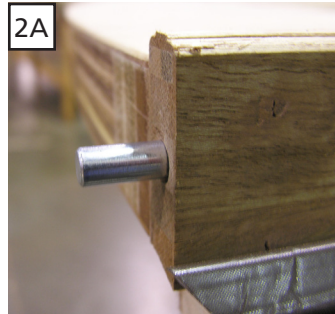
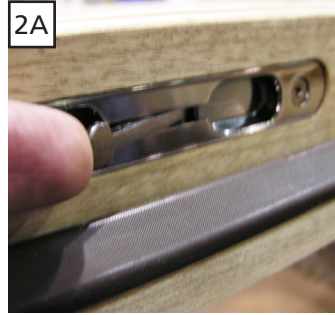
- A. To remove the lower flushbolt, remove the attachment screws and remove the flushbolt from the flushbolt rout.

B. Install the replacement flushbolt into the rout and install the screws.

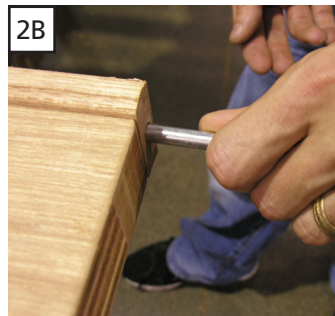


## 2 Upper Flushbolt Removal:

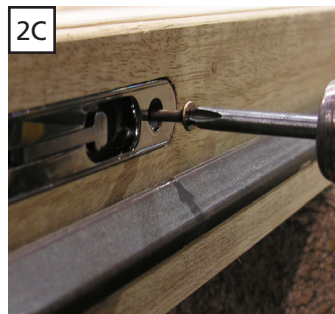
A. Flip the flushbolt lever to extend the upper flushbolt.



B. The top portion of the upper flushbolt is threaded into the flushbolt mechanism. Grasp the extended portion of upper flushbolt and twist to unthread and remove the upper flushbolt.



C. To remove the upper flushbolt mechanism, remove the attachment screws and remove the mechanism from the flushbolt rout.



## 2 Upper Flushbolt Removal (continued):

This photo shows the mechanism and rod removed from the astragal to demonstrate where and how the rod is attached.

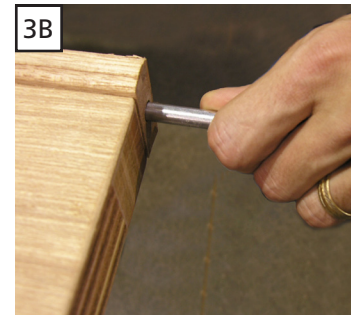
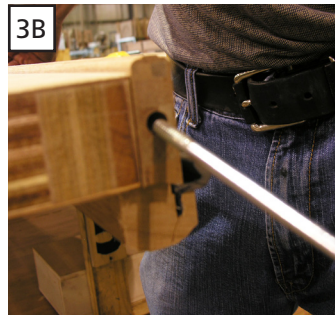


## 3 Upper Flushbolt Mechanism Replacement:

- A. Insert the replacement flushbolt and install the attachment screws.

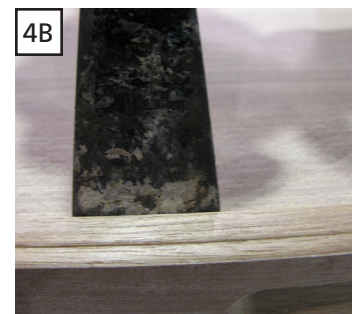
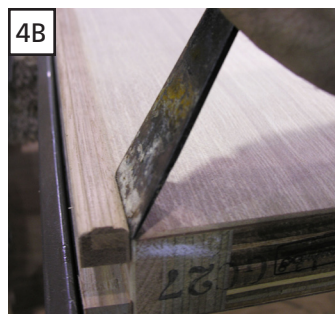


- B. Insert the replacement rod into the top of the astragal. Twist to thread the rod into the mechanism.



## 4 Astragal Replacement:

- A. With the flushbolts removed, (See Steps 1 & 2) Start on one end of the exterior side; use a hammer and a block of wood to tap the astragal off the panel edge.
- B. On the interior side; a small pry bar may be used to assist in removing astragal and continue to tap the block of wood until the astragal is removed. Go slowly and use care to not damage the panel.



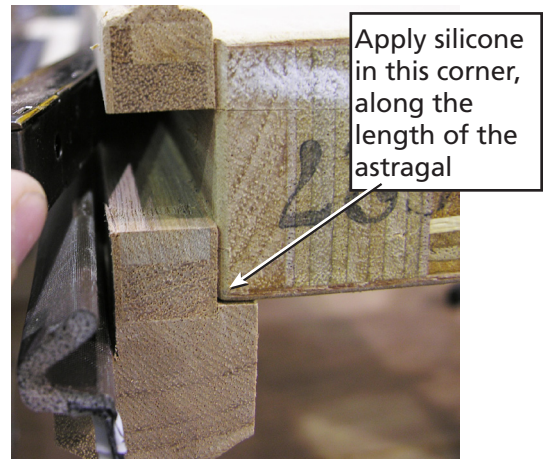


## 4 Astragal Replacement: (continued):

- C. Apply a 1/8" – 3/16" bead of silicone caulk in the corner of the astragal where it will contact the exterior of the panel along the entire length of the astragal.

Make sure no silicone is put where the flushbolts will be installed.

- D. Align replacement astragal with the panel in the correct orientation, attach using 1-1/2" finish nails spaced 8" – 10" apart.
- E. Install the flushbolts; (See Steps 1 & 3).



## Panel Installation:

- A. Re-install the panel: align the hinge knuckles and insert the hinge pins.

